

# WOODMONT CENTRE I & II

102 & 104 Woodmont Blvd.



NASHVILLE, TN

# Table of Contents

## WOODMONT CENTRE I & II

01	Interior Photos - Lobby
02	Interior Photos - Lower Level
03	Interior Photos - Lower Level
04 - 08	Floor Plans
09	Fact Sheet
10	Fact Sheet
11	Information

# INTERIOR PHOTOS - LOBBY





# INTERIOR PHOTOS - LOWER LEVEL





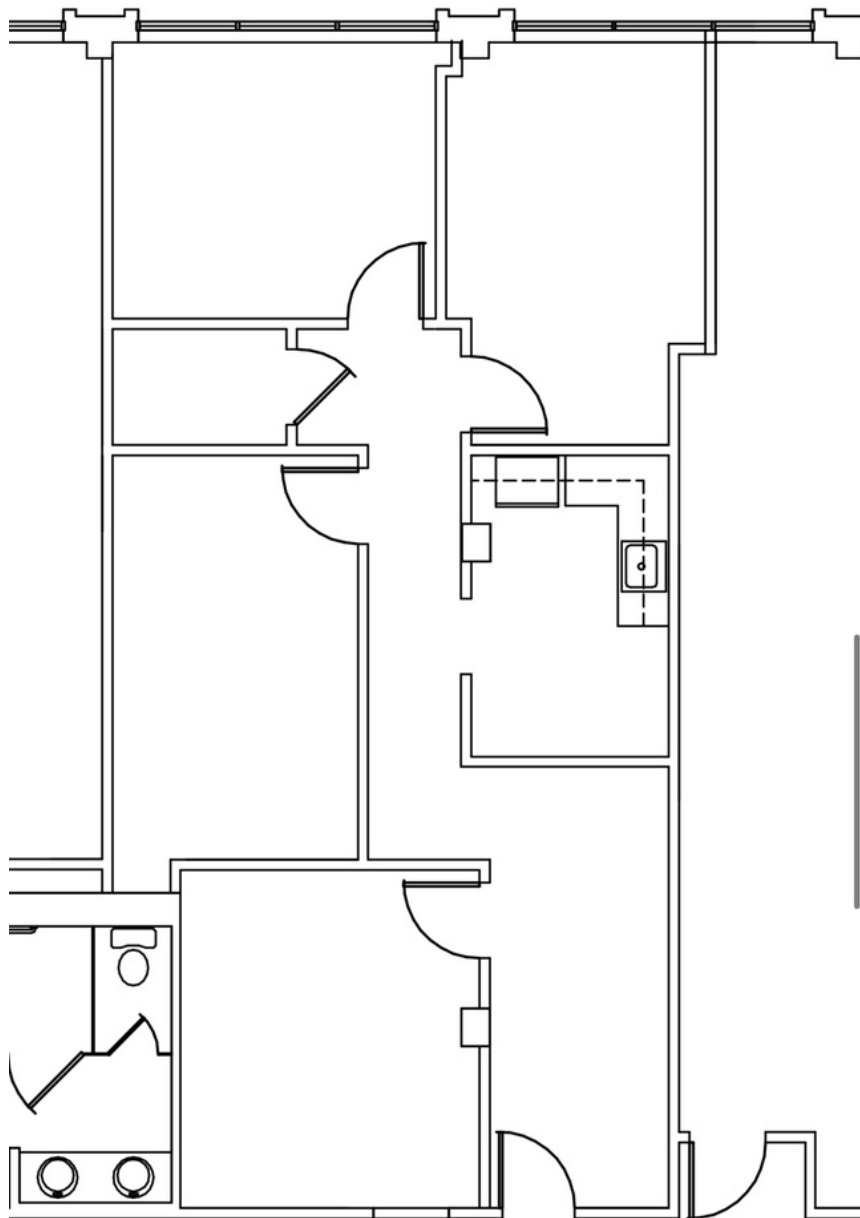
# INTERIOR PHOTOS - LOWER LEVEL



# FLOOR PLANS

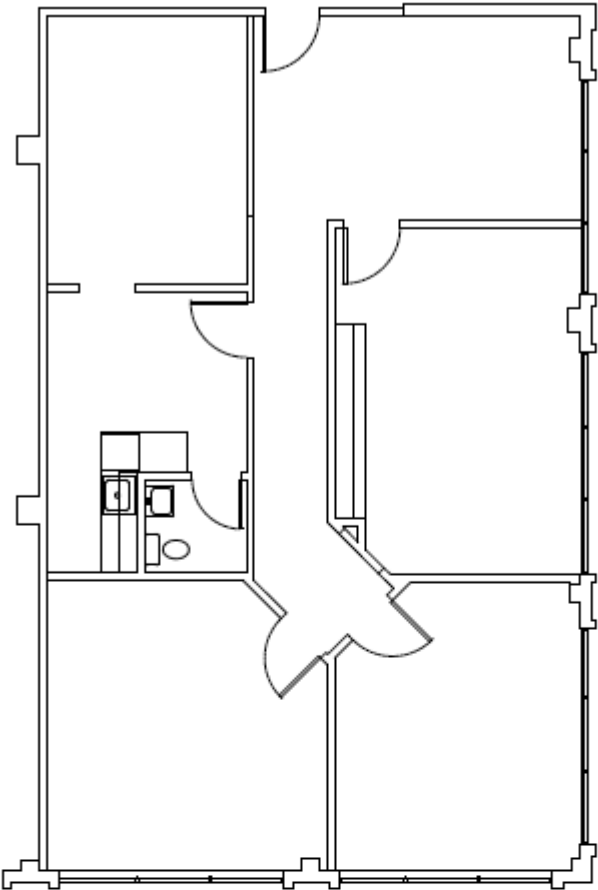
---

Woodmont Centre I  
2nd Floor  
1,206 SF

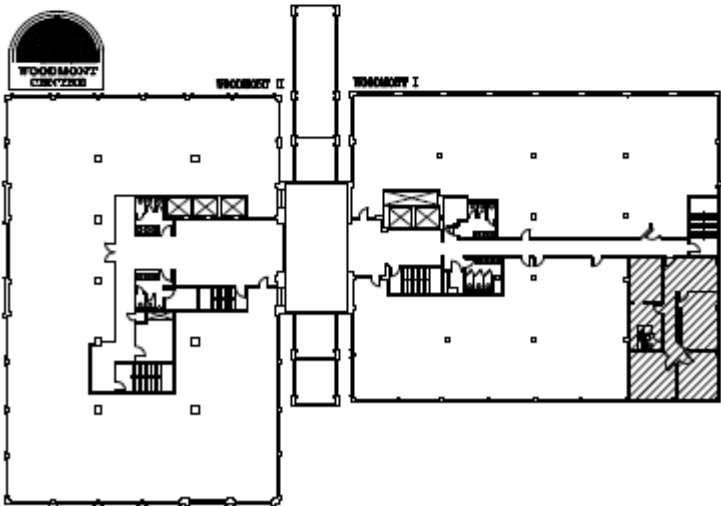


# FLOOR PLANS

Woodmont Centre I  
Suite 219  
1,538 SF

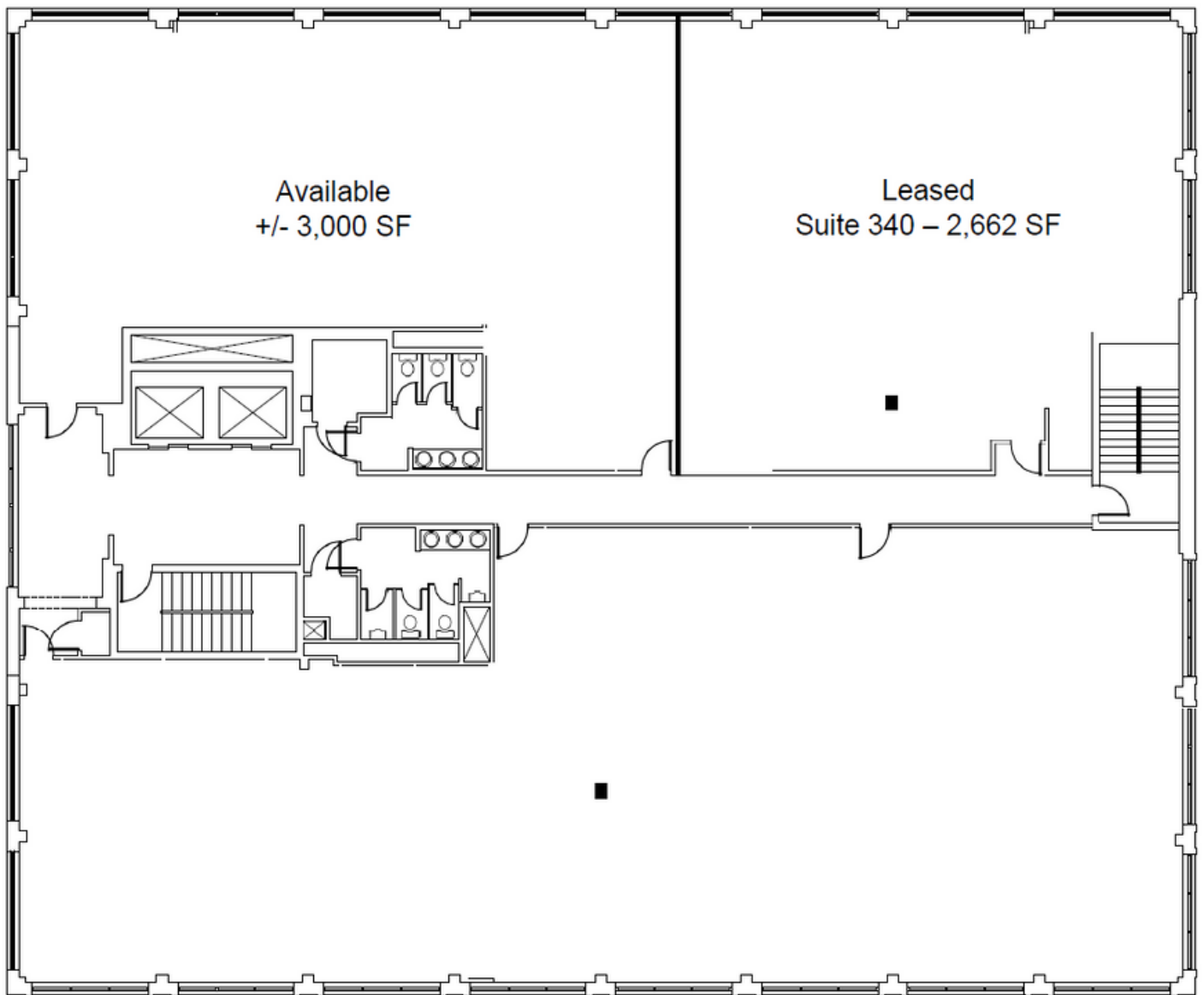


SUITE



# FLOOR PLANS

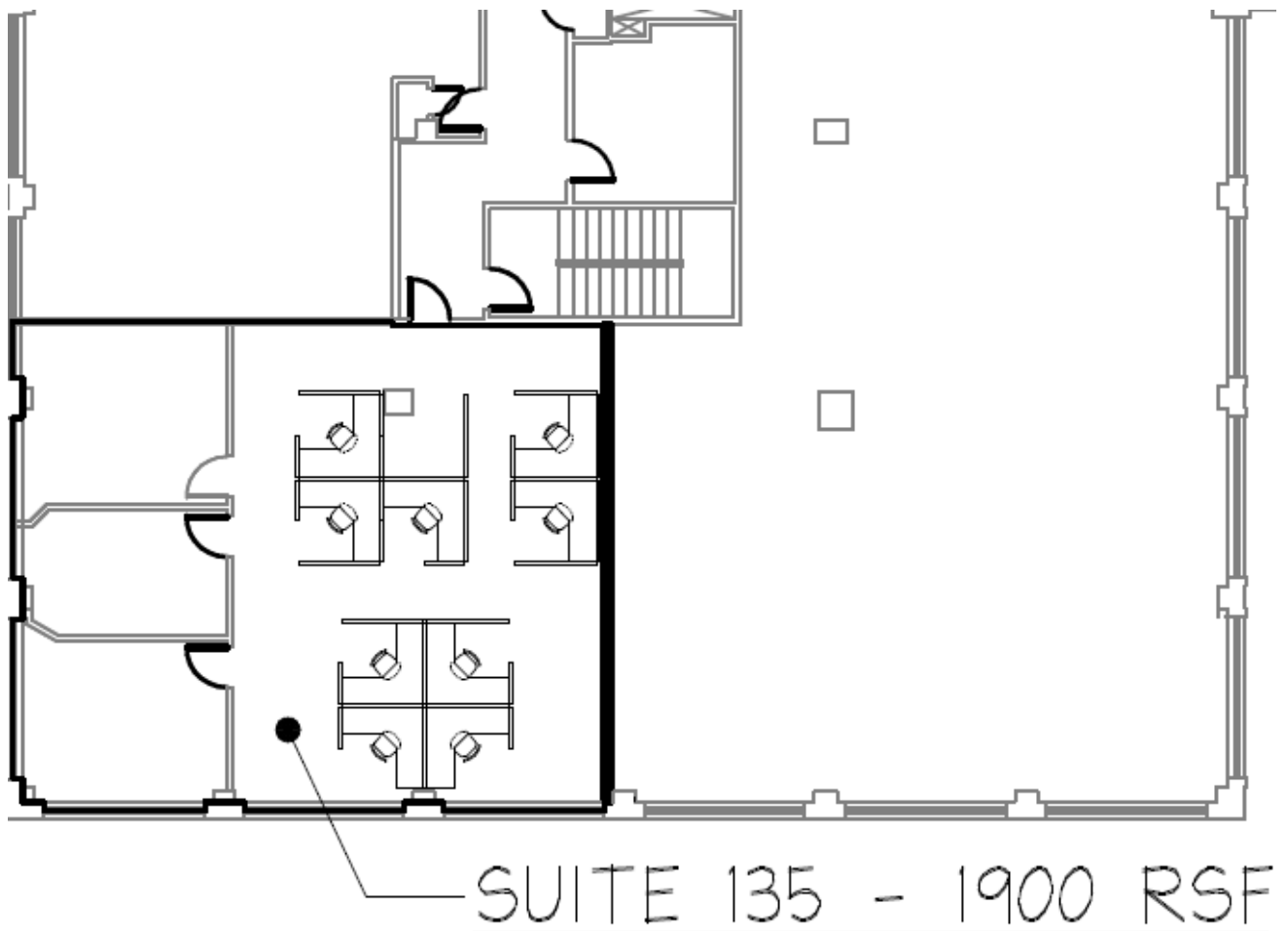
Woodmont Centre I  
3rd Floor  
+/- 3,000 SF





# FLOOR PLANS

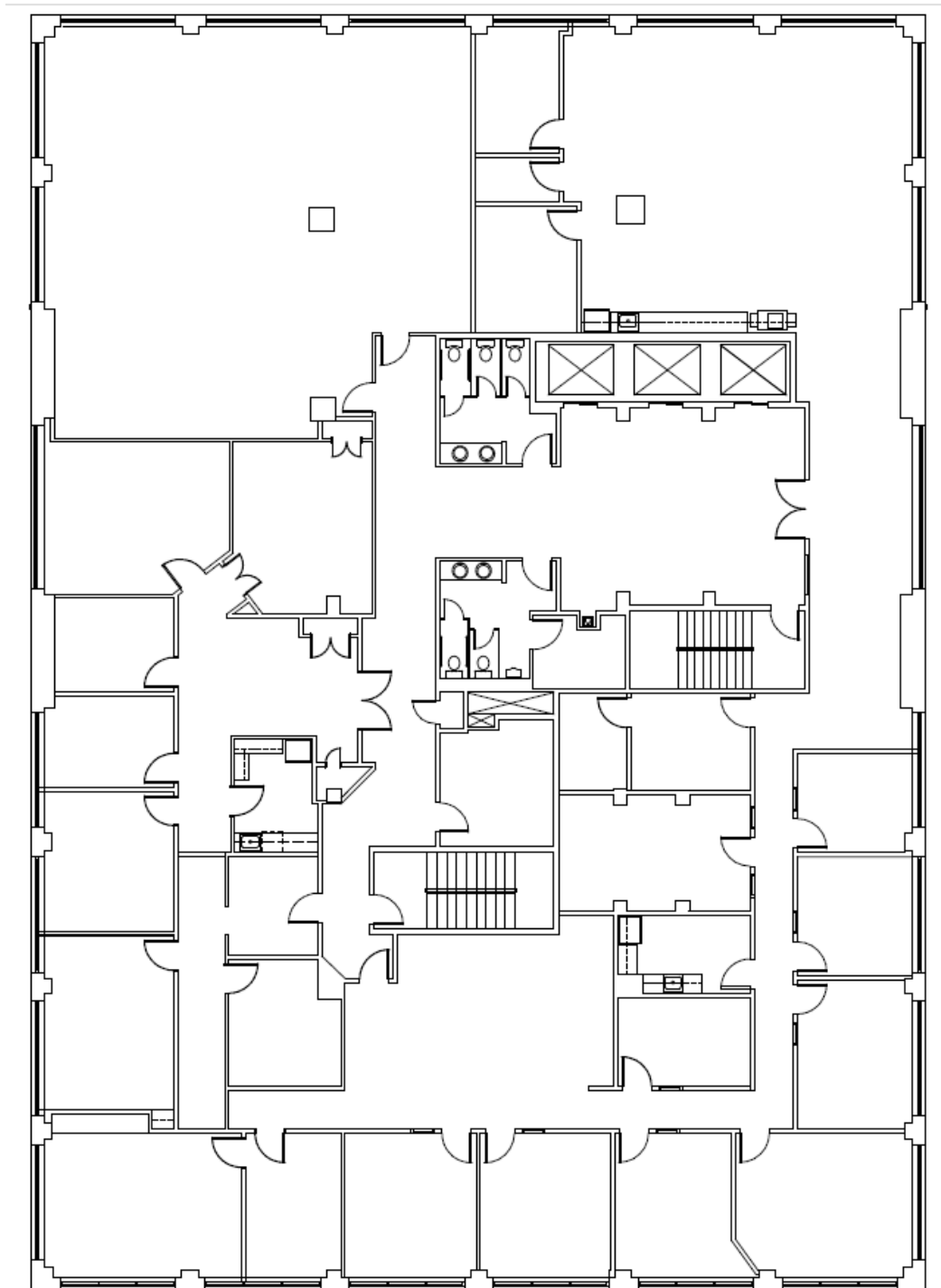
Woodmont Centre II  
1st Floor  
1,900 SF



# FLOOR PLANS

---

Woodmont Centre II  
3rd Floor  
2,000 - 9,080 SF



# FACT SHEET

**Address:**

102 and 104 Woodmont Boulevard  
Nashville, TN 37205

**Landlord:**

West End Properties, LLC, owner of 410,000 SF of office space in Nashville and Atlanta, Georgia.

**Building/Property:**

Woodmont Centre is located at the intersection of Harding Road and Woodmont Blvd. in the Belle Meade area of Nashville, 1.25 miles west I-440 and 5 miles west of downtown Nashville. The two-phased project contains 160,000 square feet of class A office space with a 500 car parking structure. The property has ingress and egress on Woodmont Blvd. and Kenner Avenue.

**Rental Rate:**

The base rental rate is quoted on a full service basis inclusive of utilities, taxes, insurance, janitorial, maintenance, etc.

**Lease Term:**

Negotiable

**CAM:**

Pass-through for increases in operating expenses over base year.

**Premises:**

Woodmont Centre I  
Suite 200 - 1,286 SF  
Suite 219 - 1,538 SF  
Suite 300 - +/- 3,000 SF

Woodmont Centre II  
Suite 135 - 1,900 SF  
3rd Floor - 2,000 - 9,080 SF

**HVAC:**

Woodmont Centre has Variable Air Volume (VAV) electronically controlled HVAC system with boiler provided heat. Each floor has 15 VAV controls. The HVAC hours of operation are 8:00 am to 6:00 pm Monday-Friday, except for holidays. The after-hours charge is \$35 per hour, subject to change based on NES.

**Lobby Renovation:**

The 1st floor lobby and atrium underwent a \$700K renovation to upgrade all finishes, lighting and technology to modern Class A office building standards. The recently completed \$350K lower level lobby project renovated the common area restrooms/showers and added a new fitness center. The renovation upgraded all finishes, lighting and technology to complement the 1st floor lobby.



# FACT SHEET

**Storage:**

Storage space for tenants is available in the lower level.

**Security/Life Safety:**

Woodmont Centre has proximity security cards for access to the building and respective floors during after hours. The deposit for each card is \$20. The building contracts with Securitas Security to provide daily guard service. A uniformed guard is on-site from 10:00 am to 6:00 pm Monday-Friday. The parking garage has two (2), 24 hour video taped surveillance cameras. The building fire detection systems are monitored 24 hours a day. A generator operates life safety equipment in times of power failure.

**Amenities:**

The building is close to many banks, restaurants and shopping. The Publix/Hill Center and Starbucks are within walking distance. The building has vending machines on the lower level. Micro Market

<http://companykitchen.com/welcome/micro-market/provides> vending options.

Newly renovated shower facilities and lockers are located on the lower level.

**'Green' Initiatives Sustainability:**

Woodmont Centre has an active light retrofitting program to energy efficient LED or compact LED's. On tenant improvement projects, the owner recycles most demolition byproducts.

**Parking:**

The parking ratio is 3.8 spaces per 1,000 square foot of space. Unreserved spaces are available @ \$40 per space and reserved @ \$75 per space. Handicap spaces are located in the front of the building and in the parking garage.

**Telecommunications:**

The building has fiber-optic loops available from AT&T, XO and Telcove Communications. Comcast Cable provides cable TV service to the building.

**Property Management:**

Provided by Fidelity Real Estate Group, Inc., property manager, leasing and asset manager for agent for eleven (11) buildings comprising 760,000 square feet of office and retail space.



## FOR MORE INFORMATION CONTACT:

Chris G. Smith  
csmith@fidelityreg.com  
Direct: 615.727.0114  
Cell: 615.351.8803  
Fax: 615.297.7427

---

[WWW.FIDELITYREG.COM](http://WWW.FIDELITYREG.COM)

102 Woodmont Blvd. Suite LL 110  
Nashville, Tennessee 3720